



# Tera-Lite Inc.

1631 South 10<sup>th</sup> Street  
San Jose, CA 95112-2594  
(408) 288-8655 Fax (408) 288-9655  
Email: [teralite@ix.netcom.com](mailto:teralite@ix.netcom.com)  
CSL # 363562

## Tera-Gem III DQ Tera-Blend



Bone White



Sand Beige



Light Gray



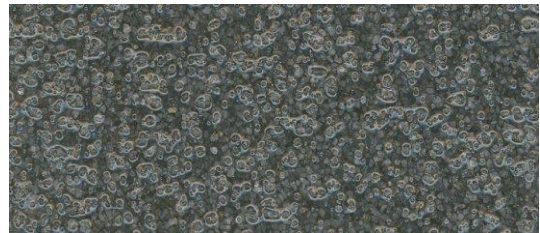
Gray



Tile Red



Forest Green



Charcoal

Printed color charts approximate actual color. Final color approval should be made from actual sample.  
Final color appearance is affected by lighting, surface texture, and method of application.